

Forth Junction Heritage Society  
**Collections Inventory – Section 2 – Railway Equipment**

Type of Collection Item:

Permanent Artifact    **Archival**    Study

Item: **18" Section of 1890 C&ER 55# Rail**

Item #: **14.2.01**

Registration #:

Classification: **Railway Equipment**

Source: **Enderby Museum, BC**

Source Item #:

Conditions: Gifted unconditionally

Original Source: **CPR**

Current Location: **Pettypiece home** as of September 2014

Description: 18-19" section of original 1890 Calgary & Edmonton Railway track weighing 25 lb.

History: Discovered by curator of Enderby & District Museum in June 2014 during taking up of track on the Sicamous/Vernon section of the Okanagan sub. It had been used as a bridge guide rail on a trestle at SW corner of Mara Lake at the outlet of Rosemond Lake. Donated by CPR to FJHS. Section cut to 18" by Enderby Museum. Rail manufactured by Bolckow, Vaughan & Co., Middlesbrough, Great Britain, believed to be a division of Barrow Steel.



Forth Junction Heritage Society

## **Collections Inventory – Section 2 – Railway Equipment**

Type of Collection Item:

Permanent Artifact    **Archival**    Study

Item: **CNR Red Deer Switch Lock**

Item #: **17.2.01**

Registration #:

Classification: **Railway Equipment**

Source: **Cliff Fuller, Red Deer**

Source Item #:

Conditions: Gifted unconditionally

Original Source: **CNR Red Deer**

Current Location: **Pettypiece home** as of August 2018

Description: Switch lock from CN Red Deer yard 1960

History:

No photo

Forth Junction Heritage Society

## Collections Inventory – Section 2 – Railway Equipment

Type of Collection Item:

Permanent Artifact Archival Study

Item: **Assorted Railway Spikes**

Item #: **18.2.01**

Registration #:

Classification: **Railway Equipment**

Source: **former Calgary & Edmonton Railway Station Museum, Edmonton**

Source Item #: 94.6.57

Conditions: Gifted by Junior League of Edmonton unconditionally Sept. 17, 2018

Original Source:

Current Location: **Innisfail Historical Village** as of March 2020

Description: Used to hold rails to ties.

History:



Forth Junction Heritage Society

## Collections Inventory – Section 2 – Railway Equipment

Type of Collection Item:

Permanent Artifact Archival Study

Item: **Tie Buffer Plate**

Item #: **18.2.02**

Registration #:

Classification: **Railway Equipment**

Source: **former Calgary & Edmonton Railway Station Museum, Edmonton**

Source Item #: 92.6.38

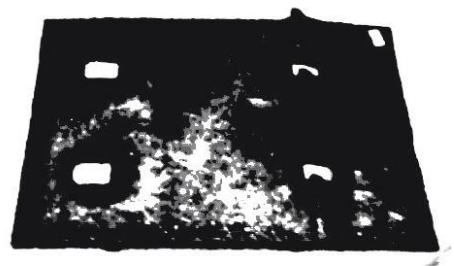
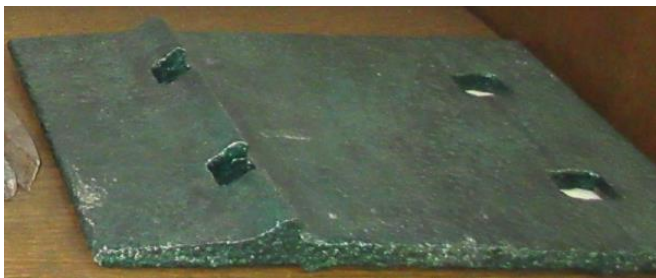
Conditions: Gifted by Junior League of Edmonton unconditionally Sept. 17, 2018

Original Source:

Current Location: **Innisfail Historical Village** as of March 2020

Description: Used to minimize wear on ties.

History:



Forth Junction Heritage Society

## Collections Inventory – Section 2 – Railway Equipment

Type of Collection Item:

Permanent Artifact    Archival    Study

Item: **Caboose Marker Light**

Item #: **18.2.03**

Registration #:

Classification: **Railway Equipment**

Source: **former Calgary & Edmonton Railway Station Museum, Edmonton**

Source Item #: 92.6.04

Conditions: Gifted by Junior League of Edmonton unconditionally Sept. 17, 2018

Original Source: **Mr. J. Uebell**

Current Location: **Innisfail Historical Village** as of March 2020

Description: Tail-end caboose marker light with red, green and yellow lenses.

History: Used to indicate the rear of the train



Forth Junction Heritage Society  
**Collections Inventory – Section 2 – Railway Equipment**

Type of Collection Item:

Permanent Artifact **Archival** Study

Item: **Switch Stand Lamp**

Item #: **18.2.04**

Registration #:

Classification: **Railway Equipment**

Source: **former Calgary & Edmonton Railway Station Museum, Edmonton**

Source Item #: 92.6.05

Conditions: Gifted by Junior League of Edmonton unconditionally Sept. 17, 2018

Original Source: **Mr. J. Uebell**

Current Location: **Innisfail Historical Village** as of March 2020

Description: Switch stand lamp with red and green lenses only.

History: Located at the switch stand at the entry and exit of sidings, green indicated that the switch was aligned with the main or through line while the red indicated that the switch was turned toward the siding.





Forth Junction Heritage Society

## **Collections Inventory – Section 2 – Railway Equipment**

Type of Collection Item:

Permanent Artifact    **Archival**    Study

Item: **Kerosene Lamp prior to 1950**

Item #: **18.2.05**

Registration #:

Classification: **Railway Equipment**

Source: **former Calgary & Edmonton Railway Station Museum, Edmonton**

Source Item #: 92.6.21

Conditions: Gifted by Junior League of Edmonton unconditionally Sept. 17, 2018

Original Source: **Mr. Bob Gibson**

Current Location: **Innisfail Historical Village** as of March 2020

Description: Kerosene lamp prior to 1950

History: Used for checking freight cars.



Forth Junction Heritage Society

## Collections Inventory – Section 2 – Railway Equipment

Type of Collection Item:

Permanent Artifact    Archival    Study

Item: **Car Inspection Gas Lamp c1950s - 1**

Item #: **18.2.06**

Registration #:

Classification: **Railway Equipment**

Source: **former Calgary & Edmonton Railway Station Museum, Edmonton**

Source Item #: 92.6.06

Conditions: Gifted by Junior League of Edmonton unconditionally Sept. 17, 2018

Original Source: **Mr. Bob Gibson**

Current Location: **Innisfail Historical Village** as of March 2020

Description: Car inspector's lamp (gas) c1950s

History: Used for checking car brakes, wheels, etc at night. Carbide is put in the bottom of the lamp and water is then allowed to drip onto the carbide. A gas is created which is then lit.  
Tended to freeze in winter.





Forth Junction Heritage Society

## Collections Inventory – Section 2 – Railway Equipment

Type of Collection Item:

Permanent Artifact Archival Study

Item: **Car Inspection Gas Lamp c1950s - 2**

Item #: **18.2.07**

Registration #:

Classification: **Railway Equipment**

Source: **former Calgary & Edmonton Railway Station Museum, Edmonton**

Source Item #: 92.6.07

Conditions: Gifted by Junior League of Edmonton unconditionally Sept. 17, 2018

Original Source: **Mr. Bob Gibson**

Current Location: **Innisfail Historical Village** as of March 2020

Description: Car inspector's lamp (gas) c1950s

History: Used for checking car brakes, wheels, etc at night. Originally kerosene. A hole was drilled in bottom so it could be used as an electric lamp.



Forth Junction Heritage Society

## Collections Inventory – Section 2 – Railway Equipment

Type of Collection Item:

Permanent Artifact Archival Study

Item: **Battery-operated Lamp**

Item #: **18.2.08**

Registration #:

Classification: **Railway Equipment**

Source: **former Calgary & Edmonton Railway Station Museum, Edmonton**

Source Item #: 92.6.02

Conditions: Gifted by Junior League of Edmonton unconditionally Sept. 17, 2018

Original Source: **Mr. Bob Gibson**

Current Location: **Innisfail Historical Village** as of March 2020

Description: Battery-operated lamp

History: Used for checking freight car numbers



Forth Junction Heritage Society

## Collections Inventory – Section 2 – Railway Equipment

Type of Collection Item:

Permanent Artifact    Archival    Study

Item: **3 or 4 Caboose Lamps**

Item #: **18.2.09**

Registration #:

Classification: **Railway Equipment**

Source: **former Calgary & Edmonton Railway Station Museum, Edmonton**

Source Item #: 92.6.29

Conditions: Gifted by Junior League of Edmonton unconditionally Sept. 17, 2018

Original Source: **Bill Harmon**

Current Location: **Innisfail Historical Village** as of March 2020

Description: 3 or 4 caboose lamps

History: Both CNR and CPR



Forth Junction Heritage Society

## Collections Inventory – Section 2 – Railway Equipment

Type of Collection Item:

Permanent Artifact    Archival    Study

Item: **Blue Lantern**

Item #: **18.2.10**

Registration #:

Classification: **Railway Equipment**

Source: **former Calgary & Edmonton Railway Station Museum, Edmonton**

Source Item #: 92.6.03

Conditions: Gifted by Junior League of Edmonton unconditionally Sept. 17, 2018

Original Source:

Current Location: **Innisfail Historical Village** as of March 2020

Description: Blue lantern

History: A blue signal displayed at one or both ends of an engine, car or train, indicated that workmen are under or above it. When thus protected, the train engine or car must not be coupled or moved.



Forth Junction Heritage Society

## **Collections Inventory – Section 2 – Railway Equipment**

Type of Collection Item:

Permanent Artifact    **Archival**    Study

Item: **3-sided Station Lantern**

Item #: **18.2.11**

Registration #:

Classification: **Railway Equipment**

Source: **former Calgary & Edmonton Railway Station Museum, Edmonton**

Source Item #: 92.6.40

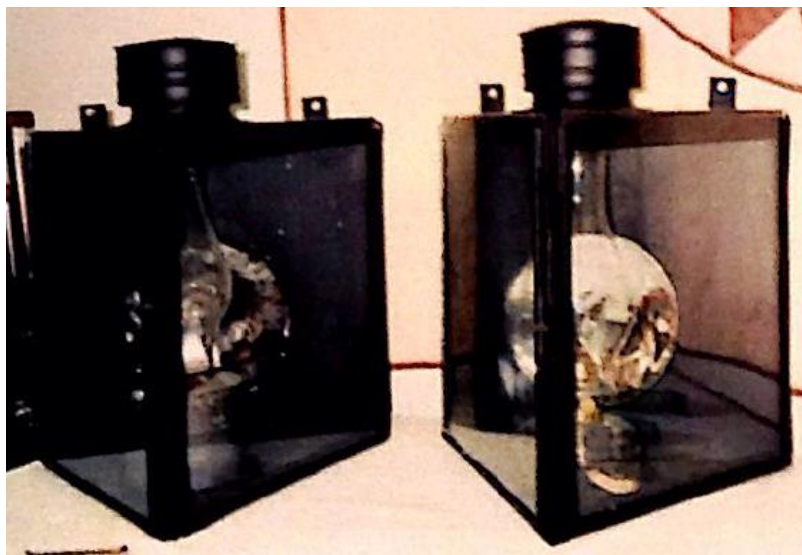
Conditions: Gifted by Junior League of Edmonton unconditionally Sept. 17, 2018

Original Source:

Current Location: **Innisfail Historical Village** as of March 2020

Description: 2 - 3-sided station lanterns

History: Put on the outside of the station so that train engineers could see the station from a distance at night.



Forth Junction Heritage Society

## Collections Inventory – Section 2 – Railway Equipment

Type of Collection Item:

Permanent Artifact    Archival    Study

Item: **Clear Hand Lantern**

Item #: **18.2.12**

Registration #:

Classification: **Railway Equipment**

Source: **former Calgary & Edmonton Railway Station Museum, Edmonton**

Source Item #: 92.6.47

Conditions: Gifted by Junior League of Edmonton unconditionally Sept. 17, 2018

Original Source: **Bill Owen**

Current Location: **Innisfail Historical Village** as of March 2020

Description: hand lantern (clear)

History: Used at night to give signals to locomotive engineers





Forth Junction Heritage Society

## Collections Inventory – Section 2 – Railway Equipment

Type of Collection Item:

Permanent Artifact    Archival    Study

Item: **Red Flagging Lamp**

Item #: **18.2.13**

Registration #:

Classification: **Railway Equipment**

Source: **former Calgary & Edmonton Railway Station Museum, Edmonton**

Source Item #: 92.6.48

Conditions: Gifted by Junior League of Edmonton unconditionally Sept. 17, 2018

Original Source: **Bob Donlevy**

Current Location: **Innisfail Historical Village** as of March 2020

Description: Red flagging lamp

History: Used at night to stop trains. Used in conjunction with flagging kits.



Forth Junction Heritage Society

## Collections Inventory – Section 2 – Railway Equipment

Type of Collection Item:

Permanent Artifact Archival Study

Item: **White Flags 1**

Item #: **18.2.14**

Registration #:

Classification: **Railway Equipment**

Source: **former Calgary & Edmonton Railway Station Museum, Edmonton**

Source Item #: 92.6.08

Conditions: Gifted by Junior League of Edmonton unconditionally Sept. 17, 2018

Original Source:

Current Location: **Innisfail Historical Village** as of March 2020

Description: Extra train white flags

History: Extra trains not found in timetables would display 2 white flags and/or 2 white lights at night on the front of the locomotive until around 1990. Virtually all trains are now extras.



Forth Junction Heritage Society

## Collections Inventory – Section 2 – Railway Equipment

Type of Collection Item:

Permanent Artifact Archival Study

Item: **White Flags 2**

Item #: **18.2.15**

Registration #:

Classification: **Railway Equipment**

Source: **former Calgary & Edmonton Railway Station Museum, Edmonton**

Source Item #: 92.6.09

Conditions: Gifted by Junior League of Edmonton unconditionally Sept. 17, 2018

Original Source:

Current Location: **Innisfail Historical Village** as of March 2020

Description: Extra train white flags

History: Extra trains not found in timetables would display 2 white flags and/or 2 white lights at night on the front of the locomotive until around 1990. Virtually all trains are now extras.



Forth Junction Heritage Society

## Collections Inventory – Section 2 – Railway Equipment

Type of Collection Item:

Permanent Artifact Archival Study

Item: **Green Flags 1**

Item #: **18.2.16**

Registration #:

Classification: **Railway Equipment**

Source: **former Calgary & Edmonton Railway Station Museum, Edmonton**

Source Item #: 92.6.10

Conditions: Gifted by Junior League of Edmonton unconditionally Sept. 17, 2018

Original Source:

Current Location: **Innisfail Historical Village** as of March 2020

Description: Green flags

History: When a train not found in timetables was split into two or more sections, all sections except the last displayed 2 green flags and/or 2 green lights at night on the front of the locomotive until around 1990.



Forth Junction Heritage Society

## Collections Inventory – Section 2 – Railway Equipment

Type of Collection Item:

Permanent Artifact Archival Study

Item: **Green Flags 2**

Item #: **18.2.17**

Registration #:

Classification: **Railway Equipment**

Source: **former Calgary & Edmonton Railway Station Museum, Edmonton**

Source Item #: 92.6.11

Conditions: Gifted by Junior League of Edmonton unconditionally Sept. 17, 2018

Original Source:

Current Location: **Innisfail Historical Village** as of March 2020

Description: Green flags

History: When a train not found in timetables was split into two or more sections, all sections except the last displayed 2 green flags and/or 2 green lights at night on the front of the locomotive until around 1990.



Forth Junction Heritage Society

## Collections Inventory – Section 2 – Railway Equipment

Type of Collection Item:

Permanent Artifact Archival Study

Item: **Red Signal Flags**

Item #: **18.2.18**

Registration #:

Classification: **Railway Equipment**

Source: **former Calgary & Edmonton Railway Station Museum, Edmonton**

Source Item #: 92.6.37

Conditions: Gifted by Junior League of Edmonton unconditionally Sept. 17, 2018

Original Source: **Bill Harmon**

Current Location: **Innisfail Historical Village** as of March 2020

Description: Red signal flags

History: Used to stop trains.





Forth Junction Heritage Society

## Collections Inventory – Section 2 – Railway Equipment

Type of Collection Item:

Permanent Artifact Archival Study

Item: **Flagging Kits**

Item #: **18.2.19**

Registration #:

Classification: **Railway Equipment**

Source: **former Calgary & Edmonton Railway Station Museum, Edmonton**

Source Item #: 92.6.34

Conditions: Gifted by Junior League of Edmonton unconditionally Sept. 17, 2018

Original Source: **Bill Harmon**

Current Location: **Innisfail Historical Village** as of March 2020

Description: Flagging kits contained fuses and torpedoes to flag and stop trains.

History:



Forth Junction Heritage Society

## Collections Inventory – Section 2 – Railway Equipment

Type of Collection Item:

Permanent Artifact Archival Study

Item: **Flagging Fuses**

Item #: **18.2.20**

Registration #:

Classification: **Railway Equipment**

Source: **former Calgary & Edmonton Railway Station Museum, Edmonton**

Source Item #: 92.6.35

Conditions: Gifted by Junior League of Edmonton unconditionally Sept. 17, 2018

Original Source: **Bill Harmon**

Current Location: **Innisfail Historical Village** as of March 2020

Description: Fuses to flag and stop trains.

History:



Forth Junction Heritage Society

## Collections Inventory – Section 2 – Railway Equipment

Type of Collection Item:

Permanent Artifact Archival Study

Item: **Fuses Rack**

Item #: **18.2.21**

Registration #:

Classification: **Railway Equipment**

Source: **former Calgary & Edmonton Railway Station Museum, Edmonton**

Source Item #: 92.6.36

Conditions: Gifted by Junior League of Edmonton unconditionally Sept. 17, 2018

Original Source: **Bill Owen**

Current Location: **Innisfail Historical Village** as of March 2020

Description: Used to store fuses.

History:



Forth Junction Heritage Society

## Collections Inventory – Section 2 – Railway Equipment

Type of Collection Item:

Permanent Artifact    Archival    Study

Item: **Way Phone**

Item #: **18.2.22**

Registration #:

Classification: **Railway Equipment**

Source: **former Calgary & Edmonton Railway Station Museum, Edmonton**

Source Item #: 92.6.45

Conditions: Gifted by Junior League of Edmonton unconditionally Sept. 17, 2018

Original Source:

Current Location: **Innisfail Historical Village** as of March 2020

Description: Way phone

History: Located at all main line switches, these phones were used by train and engine crews and other railway personnel when it was necessary to communicate with the train dispatcher.



Forth Junction Heritage Society

## Collections Inventory – Section 2 – Railway Equipment

Type of Collection Item:

Permanent Artifact    Archival    Study

Item: **Switch Lock**

Item #: **18.2.23**

Registration #:

Classification: **Railway Equipment**

Source: **former Calgary & Edmonton Railway Station Museum, Edmonton**

Source Item #: 92.6.49

Conditions: Gifted by Junior League of Edmonton unconditionally Sept. 17, 2018

Original Source:

Current Location: **Innisfail Historical Village** as of March 2020

Description: Switch lock used to secure switches.

History:



Forth Junction Heritage Society

## Collections Inventory – Section 2 – Railway Equipment

Type of Collection Item:

Permanent Artifact    Archival    Study

Item: **Switch Keys**

Item #: **18.2.24**

Registration #:

Classification: **Railway Equipment**

Source: **former Calgary & Edmonton Railway Station Museum, Edmonton**

Source Item #: 92.6.50

Conditions: Gifted by Junior League of Edmonton unconditionally Sept. 17, 2018

Original Source:

Current Location: **Innisfail Historical Village** as of March 2020

Description: Used to open and lock switch locks.

History:





Forth Junction Heritage Society

## Collections Inventory – Section 2 – Railway Equipment

Type of Collection Item:

Permanent Artifact Archival Study

Item: **Train order hoop 1**

Item #: **18.2.25**

Registration #:

Classification: **Railway Equipment**

Source: **former Calgary & Edmonton Railway Station Museum, Edmonton**

Source Item #: 92.6.22

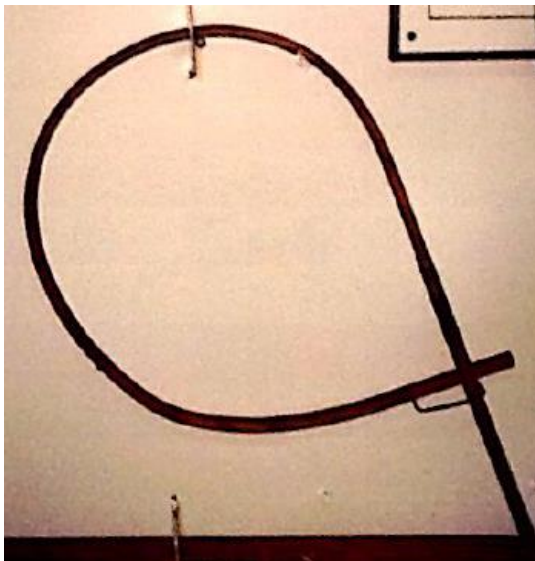
Conditions: Gifted by Junior League of Edmonton unconditionally Sept. 17, 2018

Original Source: **Harvey Greene and Wally Yost**

Current Location: **Innisfail Historical Village** as of March 2020

Description: Train order hoop

History: Train orders were put in the wire of the hoop. A station agent would hold the hoop up to the conductor of the moving train, who would grab the large hoop handle, take the hoop into the moving train, retrieve the message and then throw the hoop back on the ground.



Forth Junction Heritage Society

## Collections Inventory – Section 2 – Railway Equipment

Type of Collection Item:

Permanent Artifact Archival Study

Item: **Train order hoop 2**

Item #: **18.2.26**

Registration #:

Classification: **Railway Equipment**

Source: **former Calgary & Edmonton Railway Station Museum, Edmonton**

Source Item #: 92.6.30

Conditions: Gifted by Junior League of Edmonton unconditionally Sept. 17, 2018

Original Source:

Current Location: **Innisfail Historical Village** as of March 2020

Description: Train order hoop

History: Train orders were put in the wire of the hoop. A station agent would hold the hoop up to the conductor of the moving train, who would grab the large hoop handle, take the hoop into the moving train, retrieve the message and then throw the hoop back on the ground.



Forth Junction Heritage Society

## Collections Inventory – Section 2 – Railway Equipment

Type of Collection Item:

Permanent Artifact Archival Study

Item: **Ice Tongs**

Item #: **18.2.27**

Registration #:

Classification: **Railway Equipment**

Source: **former Calgary & Edmonton Railway Station Museum, Edmonton**

Source Item #: 92.6.17

Conditions: Gifted by Junior League of Edmonton unconditionally Sept. 17, 2018

Original Source: **Harvey Greene and Wally Yost**

Current Location: **Innisfail Historical Village** as of March 2020

Description: Large ice tongs with handles

History: During the winter in Edmonton, men would collect large square chunks of ice from the North Saskatchewan River, then take them to ice house in Strathcona and pack them in ice and sawdust. Ice preserved this way would keep all summer and would be used for refrigeration on railway cars that included meat going to Winnipeg.



Forth Junction Heritage Society

## Collections Inventory – Section 2 – Railway Equipment

Type of Collection Item:

Permanent Artifact Archival Study

Item: **Packing Iron**

Item #: **18.2.28**

Registration #:

Classification: **Railway Equipment**

Source: **former Calgary & Edmonton Railway Station Museum, Edmonton**

Source Item #: 92.6.18

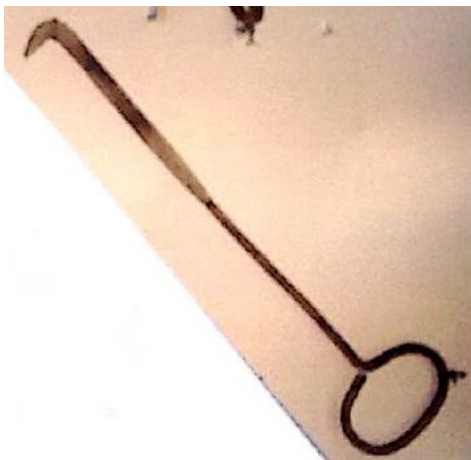
Conditions: Gifted by Junior League of Edmonton unconditionally Sept. 17, 2018

Original Source: **Harvey Greene and Wally Yost**

Current Location: **Innisfail Historical Village** as of March 2020

Description: Packing iron – light green/grey hook

History: This was used to pack heavily greased waste to lubricate the wheels.



Forth Junction Heritage Society

## Collections Inventory – Section 2 – Railway Equipment

Type of Collection Item:

Permanent Artifact Archival Study

Item: **2 Ice & Water Containers**

Item #: **18.2.29**

Registration #:

Classification: **Railway Equipment**

Source: **former Calgary & Edmonton Railway Station Museum, Edmonton**

Source Item #: 92.6.13

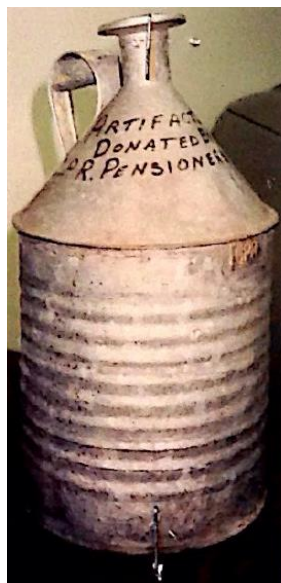
Conditions: Gifted by Junior League of Edmonton unconditionally Sept. 17, 2018

Original Source: **Mr. Bob Gibson**

Current Location: **Innisfail Historical Village** as of March 2020

Description: 2 large ice and water containers

History:



Forth Junction Heritage Society

## **Collections Inventory – Section 2 – Railway Equipment**

Type of Collection Item:

Permanent Artifact    **Archival**    Study

Item: **Kerosene Tin 1**

Item #: **18.2.30**

Registration #:

Classification: **Railway Equipment**

Source: **former Calgary & Edmonton Railway Station Museum, Edmonton**

Source Item #: 92.6.14

Conditions: Gifted by Junior League of Edmonton unconditionally Sept. 17, 2018

Original Source:

Current Location: **Innisfail Historical Village** as of March 2020

Description: Kerosene tin 1

History:





Forth Junction Heritage Society

## **Collections Inventory – Section 2 – Railway Equipment**

Type of Collection Item:

Permanent Artifact    **Archival**    Study

Item: **Kerosene Tin 2**

Item #: **18.2.31**

Registration #:

Classification: **Railway Equipment**

Source: **former Calgary & Edmonton Railway Station Museum, Edmonton**

Source Item #: 92.6.15

Conditions: Gifted by Junior League of Edmonton unconditionally Sept. 17, 2018

Original Source:

Current Location: **Innisfail Historical Village** as of March 2020

Description: Kerosene tin 2

History:



Forth Junction Heritage Society

## Collections Inventory – Section 2 – Railway Equipment

Type of Collection Item:

Permanent Artifact Archival Study

Item: **Lubricating Oil Tin**

Item #: **18.2.32**

Registration #:

Classification: **Railway Equipment**

Source: **former Calgary & Edmonton Railway Station Museum, Edmonton**

Source Item #: 92.6.23

Conditions: Gifted by Junior League of Edmonton unconditionally Sept. 17, 2018

Original Source: **Mr. J. Uebell**

Current Location: **Innisfail Historical Village** as of March 2020

Description: Lubricating oil tin used to store lubricating oil.

History:



Forth Junction Heritage Society

## **Collections Inventory – Section 2 – Railway Equipment**

Type of Collection Item:

Permanent Artifact    **Archival**    Study

Item: **2 Engineer's Long Spout Oilers**

Item #: **18.2.33**

Registration #:

Classification: **Railway Equipment**

Source: **former Calgary & Edmonton Railway Station Museum, Edmonton**

Source Item #: 92.6.24

Conditions: Gifted by Junior League of Edmonton unconditionally Sept. 17, 2018

Original Source:

Current Location: **Innisfail Historical Village** as of March 2020

Description: 2 long spout oilers

History:



Forth Junction Heritage Society

## Collections Inventory – Section 2 – Railway Equipment

Type of Collection Item:

Permanent Artifact Archival Study

Item: **Brake Club**

Item #: **18.2.34**

Registration #:

Classification: **Railway Equipment**

Source: **former Calgary & Edmonton Railway Station Museum, Edmonton**

Source Item #: 92.6.16

Conditions: Gifted by Junior League of Edmonton unconditionally Sept. 17, 2018

Original Source:

Current Location: **Innisfail Historical Village**

Description:

History: Used by brakemen to apply brakes on equipment, mostly when steep descending grades were involved or in hump yards.



Forth Junction Heritage Society

## Collections Inventory – Section 2 – Railway Equipment

Type of Collection Item:

Permanent Artifact Archival Study

Item: **Air Hose Breaker & Handle**

Item #: **18.2.35**

Registration #:

Classification: **Railway Equipment**

Source: **former Calgary & Edmonton Railway Station Museum, Edmonton**

Source Item #: 92.6.20

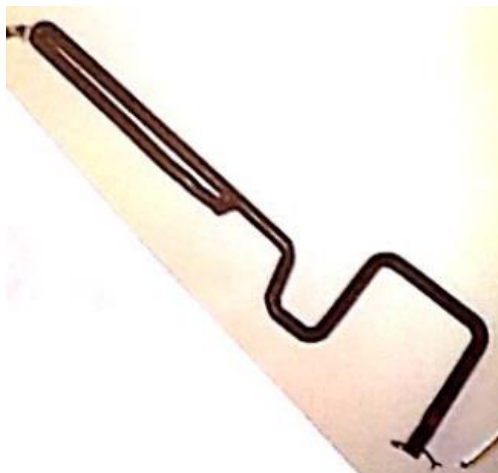
Conditions: Gifted by Junior League of Edmonton unconditionally Sept. 17, 2018

Original Source: **Harvey Greene and Wally Yost**

Current Location: **Innisfail Historical Village** as of March 2020

Description: Air hose breaker and handle. Cast iron zig zag tool.

History:



Forth Junction Heritage Society

## Collections Inventory – Section 2 – Railway Equipment

Type of Collection Item:

Permanent Artifact Archival Study

Item: **Measuring Tools**

Item #: **18.2.36**

Registration #:

Classification: **Railway Equipment**

Source: **former Calgary & Edmonton Railway Station Museum, Edmonton**

Source Item #: 92.6.25

Conditions: Gifted by Junior League of Edmonton unconditionally Sept. 17, 2018

Original Source: **Mr. J. Uebell**

Current Location: **Innisfail Historical Village** as of March 2020

Description: Various mechanic measuring tools used in railway car repairs.

History:



Forth Junction Heritage Society  
**Collections Inventory – Section 2 – Railway Equipment**

Type of Collection Item:

Permanent Artifact **Archival** Study

Item: **Fire Extinguisher**

Item #: **18.2.37**

Registration #:

Classification: **Railway Equipment**

Source: **former Calgary & Edmonton Railway Station Museum, Edmonton**

Source Item #: 92.6.19

Conditions: Gifted by Junior League of Edmonton unconditionally Sept. 17, 2018

Original Source: **Mr. J. Uebell**

Current Location: **Innisfail Historical Village** as of March 2020

Description: Fire extinguisher

History:





Forth Junction Heritage Society

## Collections Inventory – Section 2 – Railway Equipment

Type of Collection Item:

Permanent Artifact Archival Study

Item: **Triangle with Stick**

Item #: **18.2.38**

Registration #:

Classification: **Railway Equipment**

Source: **former Calgary & Edmonton Railway Station Museum, Edmonton**

Source Item #: 94.6.55

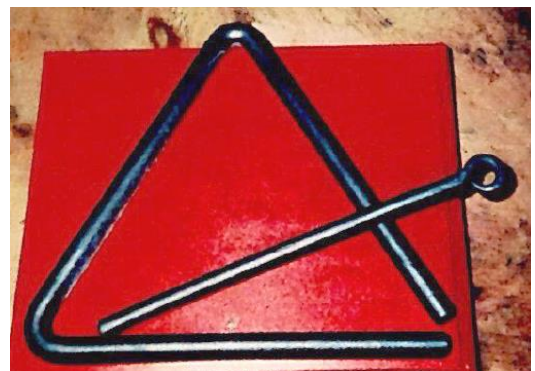
Conditions: Gifted by Junior League of Edmonton unconditionally Sept. 17, 2018

Original Source:

Current Location: **Innisfail Historical Village** as of March 2020

Description: Used to call the men in for lunch.

History:



Forth Junction Heritage Society

## Collections Inventory – Section 2 – Railway Equipment

Type of Collection Item:

Permanent Artifact Archival Study

Item: **Goggles with Case**

Item #: **18.2.39**

Registration #:

Classification: **Railway Equipment**

Source: **former Calgary & Edmonton Railway Station Museum, Edmonton**

Source Item #: 94.6.54

Conditions: Gifted by Junior League of Edmonton unconditionally Sept. 17, 2018

Original Source:

Current Location: **Innisfail Historical Village** as of March 2020

Description: Used by the trainmen to see through the soot when looking out of the locomotive to see an upcoming switch light.

History:



Forth Junction Heritage Society

## Collections Inventory – Section 2 – Railway Equipment

Type of Collection Item:

Permanent Artifact Archival Study

Item: **Engine Stove Door**

Item #: **18.2.40**

Registration #:

Classification: **Railway Equipment**

Source: **former Calgary & Edmonton Railway Station Museum, Edmonton**

Source Item #: 94.6.56

Conditions: Gifted by Junior League of Edmonton unconditionally Sept. 17, 2018

Original Source:

Current Location: **Innisfail Historical Village** as of March 2020

Description: Stove door with “McClary’s Van” on the front.

History:



Forth Junction Heritage Society

## Collections Inventory – Section 2 – Railway Equipment

Type of Collection Item:

Permanent Artifact Archival Study

Item: **2 Ox Shoes**

Item #: **18.2.41**

Registration #:

Classification: **Railway Equipment**

Source: **former Calgary & Edmonton Railway Station Museum, Edmonton**

Source Item #: 94.6.59

Conditions: Gifted by Junior League of Edmonton unconditionally Sept. 17, 2018

Original Source:

Current Location: **Innisfail Historical Village** as of March 2020

Description: 2 ox shoes with pegs

History: Worn by oxen when used as draft animals when building the railway.



Forth Junction Heritage Society  
**Collections Inventory – Section 2 – Railway Equipment**

Type of Collection Item:

Permanent Artifact    **Archival**    Study

Item: **3 Wall-Mountable CNR Oil Lamps**

Item #: **19.2.01**

Registration #:

Classification: **Railway Equipment**

Source: **former Historical Telephone Centre, Edmonton**

Source Item #:

Conditions: Gifted by Edmonton Telephone Historical Information Centre Foundation  
unconditionally September 29, 2019

Original Source:

Current Location: **Pettypiece home** as of September 30, 2019

Description: Three wall-mountable CNR oil lamps with CN punched into the metal base.

History:

